



Genesis
Financial Technologies Inc.

Genesis Financial Technologies presents the

CTP **Coast Trading Package**

Accessing the CTP Module



Oahu Capital

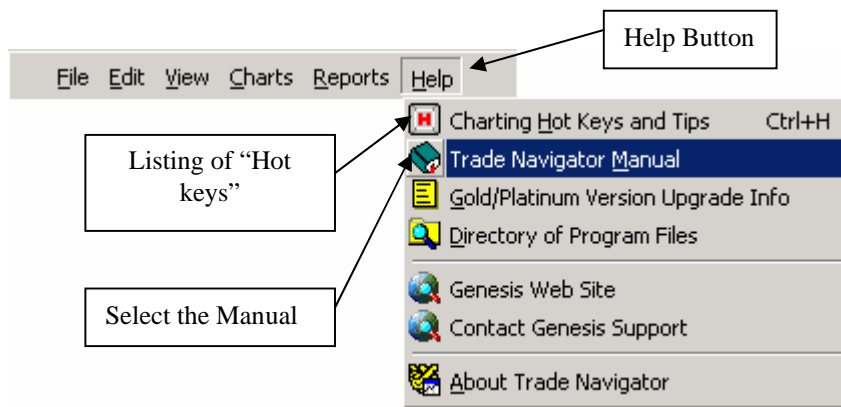
Thank you for your purchase and welcome to the Trade Navigator-Coast Trading Package. Genesis and Joe DiNapoli have combined their abilities to create the most effective, easy to use software possible. Thanks to pre-programmed studies and templates you can apply a highly flexible judgmental approach to your trading toolbox. As a student of Mr. DiNapoli's, you will undoubtedly appreciate the ease of determining Trend, Direction, and precise entry and exit points for all your trades.

Those of you who purchased the DiNapoli Thrust Scanner will enjoy the simplified use of this outstanding function. Now one program will provide you with the filtered results of the scanner and isolate a listing of thrusting symbols for your review.

The following information will provide you with insight into the application of the trading strategies of Joe DiNapoli by using the indicators specific to the Coast Trading Package within Genesis Trade Navigator Gold. This tutorial is to be used as a supplement to the software manual, and aid you specifically with accessing the Coast functions.

The Help Menu

You can access the manual from the Trade Navigator program while it is running on your computer. Look to the upper left corner for the *Help* menu. Here you can click on *Trade Navigator Manual* (Figure 1.1) to view the full document. You can also print the manual from this source. Under the *Help* menu, you will also find a listing of all available “Hot keys” used in the software. Please feel free to print this document for your easy reference.



(Figure 1.1)

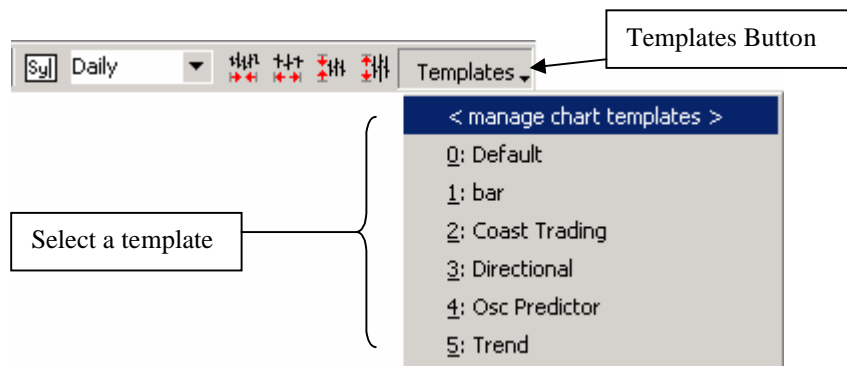
The *Help* menu also has other features related to Genesis. If you want to view the many data packages available in your CTP program, just click on *Genesis web site*.

Click on *Contact Genesis Support* if you have any questions related to the software or the data. The web page provides manuals, online class registration and upgrade information. If you have a question you can post it here, or read questions from other Genesis customers. More often than not, you will find someone has the same concern or even a solution to your question.

Many times as a pro-active customer you will want to make certain that you have the most current version of the software. After checking on the Support page for the most current version, you can click on *About Trade Navigator*. Here you can see exactly which version and build you have. Maybe it is time to obtain the newest upgrade?

CTP Templates

- Templates contain pre-programmed chart settings so that you may apply set-ups to the chart at the stroke of a key.
- Note that a numerical value is placed before the template name. Strike the numbered key and the corresponding template will be applied to the current chart.
- You can access the CTP templates you need by clicking on the Templates button at the top of the chart. (Figure 1.2)



(Figure 1.2)

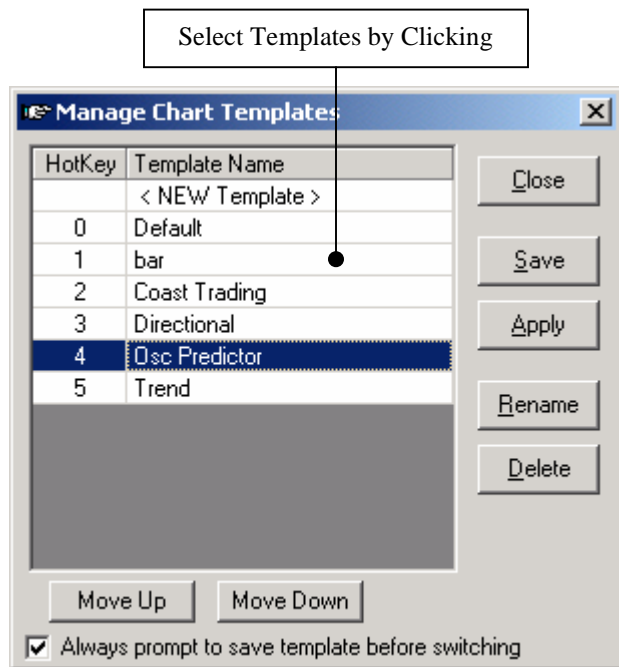
CTP templates were created to easily apply DiNapoli Techniques. The following is a brief description of each template and their application as noted by Mr. DiNapoli.

- Default (0): This template does not contain DiNapoli indicators but is supplied as a starting point from which you may create new templates.
- Bar (1): Would be used to create D Levels, if you have the Optional DiNapoli Expansion and Retracement studies.
- Coast Trading (2): Has a grouping of 4 DiNapoli indicators all together for those of you that like to look at many indicators at one time, simultaneously.
- Directional (3): Would be used to find most directional patterns.
- Osc Predictor (4): Has the oscillator predictor study ready for your analysis.
- Trend (5): Has the DiNapoli trend studies ready for your analysis.

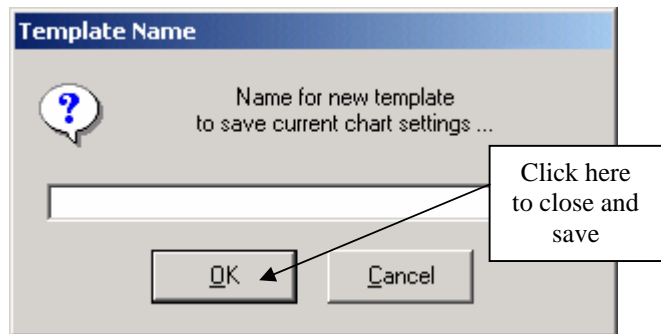
Manage Chart Templates Window

You can create unlimited templates and manage each one from the Manage Chart Templates window. You can create a new template and still maintain the CTP pre-programmed templates. To create a new template:

- Select *Manage Chart Templates* from the menu. This will allow you to edit existing templates or create new ones. (Figure 1.2)
- Select *New Template* from the new window and then *Save*. This will allow you to save the current chart settings to an easily recognizable name in a *new* template. You may also select an existing name to save the changes to that respective template.
- After entering a name, click on the OK (Figure 1.4) button to close and save the newly named template. Please note: you can edit this template at any time by resaving it after making changes to the chart when the template is applied to the chart.
- Notice that Figure 1.3 has a check box at the bottom of the window. The check will prompt the program to ask you if you wish to save the changes when going from an altered template on a chart to a new template. You may click on *NO* to proceed with out saving the changes, or you may disable this function entirely by unchecking the box.



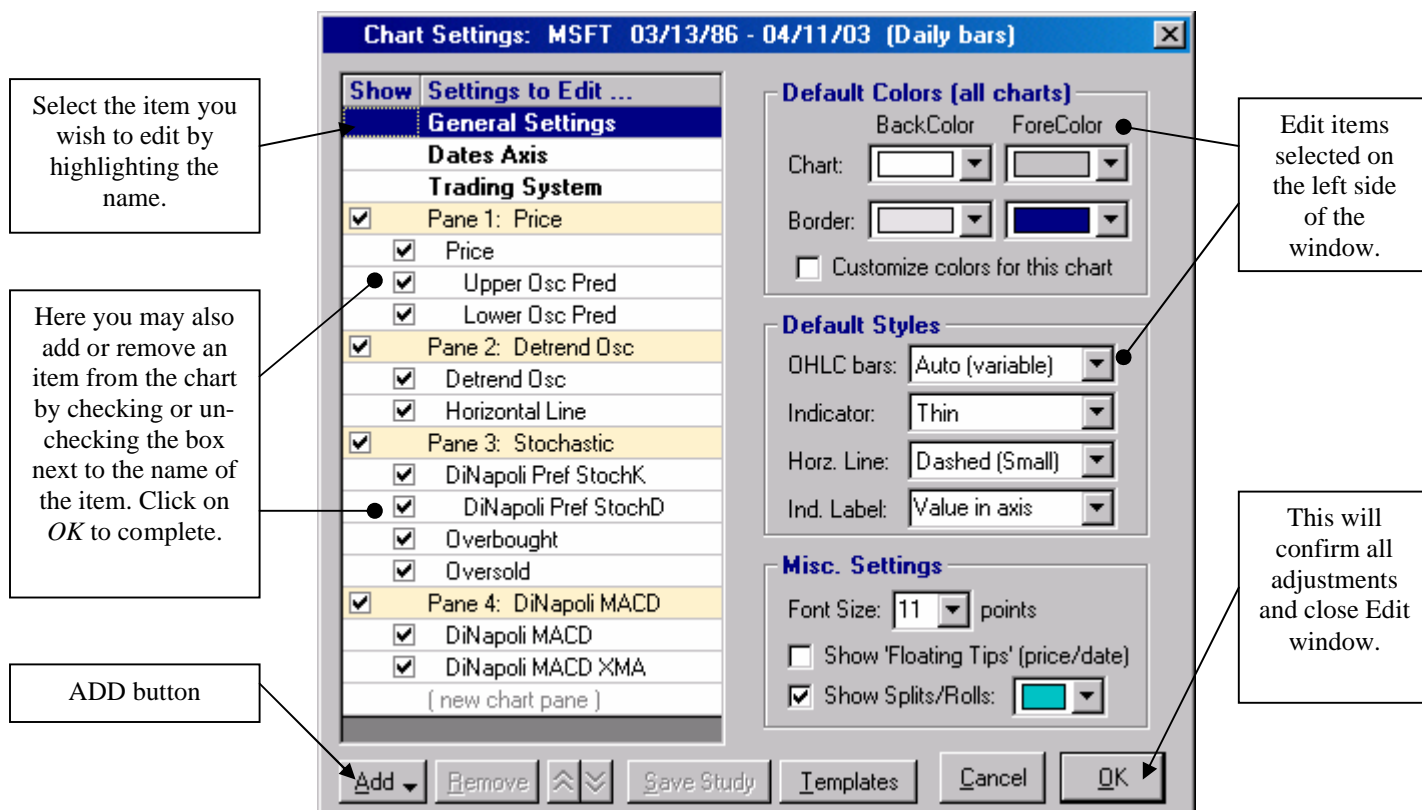
(Figure 1.3)



(Figure 1.4)

Chart Settings

- To edit the chart settings you will need to **right** click on the chart and select *Edit Chart Settings* or you may strike the “E” key. Either action will produce the *Edit Chart Settings* window. (Figure 2.1)



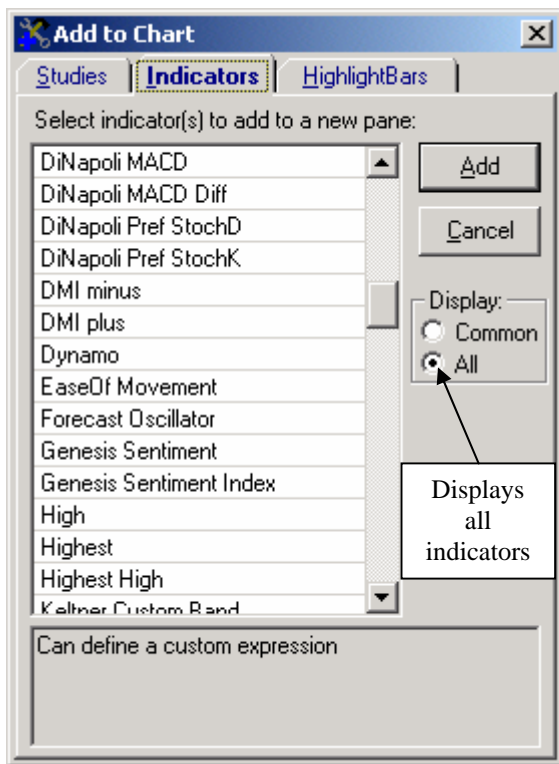
(Figure 2.1)

- Click *OK* once all adjustments have been made to apply the changes.
- Once the changes have been made, you may click on the *Templates* button at the top of the screen and then *<Manage chart templates>* to save the changes to a selected template. (Figure 1.3)
- You may also access the *Manage Chart Templates* window by clicking on the *Templates* button at the bottom of the window. (Figure 2.1)
- The *ADD* button will generate the *Add To Chart Window* (Figure 2.3). This window will aid you in adding every thing from indicators to highlighted bar patterns. All items can be added to the chart following the steps as listed below.

Adding Indicators, Studies and Highlight Bars

- To add additional indicators, studies and highlighted bar patterns, you will need to click on the *Add to Chart* button or strike the “A” key. (See figure 2.2)

(Figure 2.2)



(Figure 2.3)

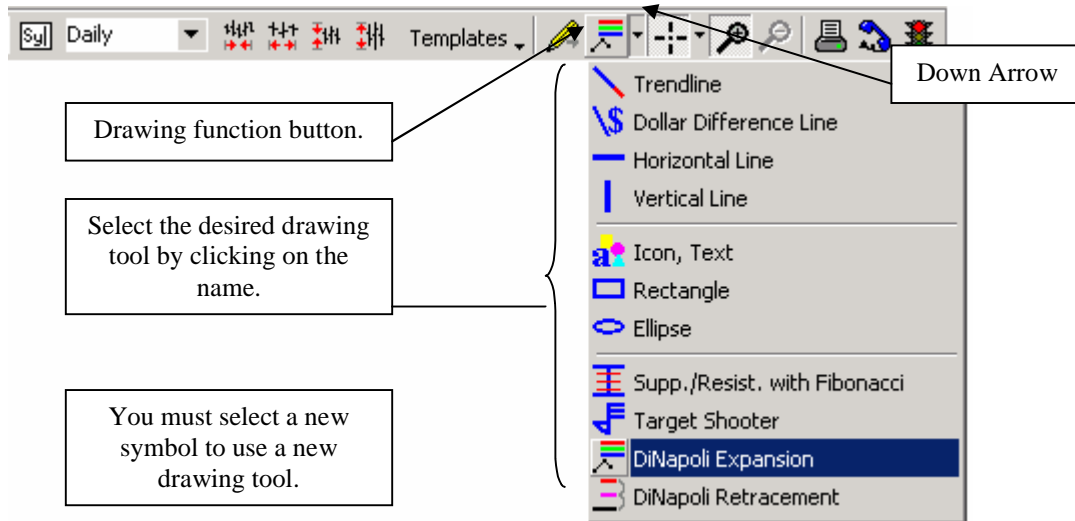
- Click on the desired tab to view all available Indicators, Studies and Highlight bars.
- Once you have selected an item, double click on the name to apply it to the chart. You may also highlight the name then click on the *Add* button to the right. The item will then be applied to the chart.
- You may save the item to any given template you choose. By doing this, you may utilize a

new setting along with many of your other favorite applications. Once the item has been applied to the chart, you can click on the *Templates* button at the top of the screen to save the changes. Please follow the steps as listed on page four when saving indicators and other items to a template.

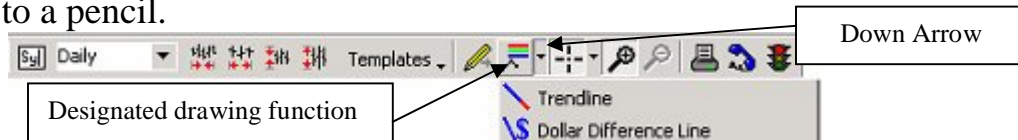
Expansion / Retracement

- To access Expansion / Retracement, click on the down arrow next to the drawing function button. (Figure 2.4) A drop down menu will appear.

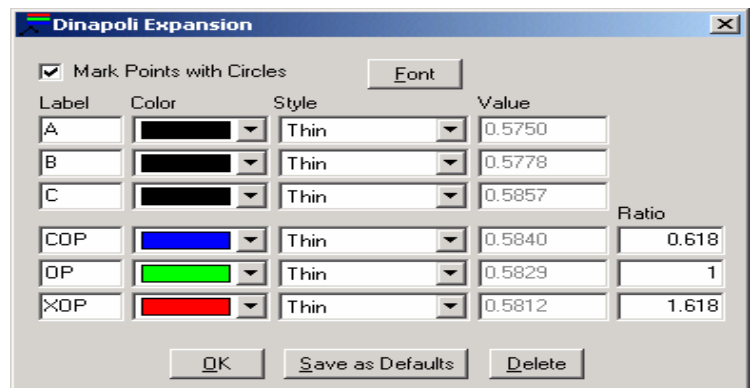
(Figure 2.4)



- You will now need to click on the desired function. The tool symbol will appear next to the down arrow. The cross hairs will turn into a pencil icon. Now program is ready to draw whichever option is selected.
- Once the desired drawing tool is next to the down arrow, activate the drawing feature by striking the “T” key. Your cross hairs will once again turn to a pencil.



- After the function is drawn on the chart, place your cursor on either extreme of the drawing. (The “A, B, C” points in the case of the expansion study). Your cursor will turn to a hand.



(Figure 2.6)

- Single left click when the hand appears. This will generate an edit window similar to the Expansion editor. (Figure 2.6)

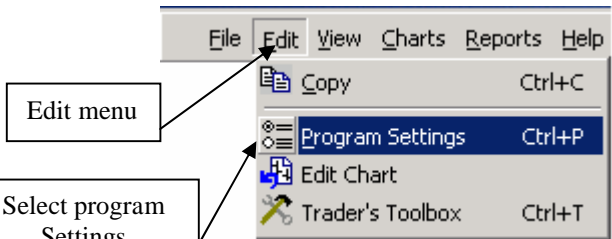
Do we have Thrust?

There are many equity symbols available to the experienced trader. Genesis has made it even easier to find potential DiNapoli Directional signals within those equities. Make better use of your time fine tuning your trading skills rather than looking at thousands of stocks for set up criteria. The Thrust Scanner will quickly search for thrusting symbols using a proprietary algorithm. This will generate an easily retrievable list of potential Directional symbols. Please contact Genesis to obtain this time saving feature. If you have previously purchased the DiNapoli Thrust scanner there is no additional charge to upgrade the Trade Navigator.

The Scanner

The Trade Navigator Gold uses Filter Criteria to scan for specific data parameters. You must enable these criteria in order to fully use the Thrust Scanner.

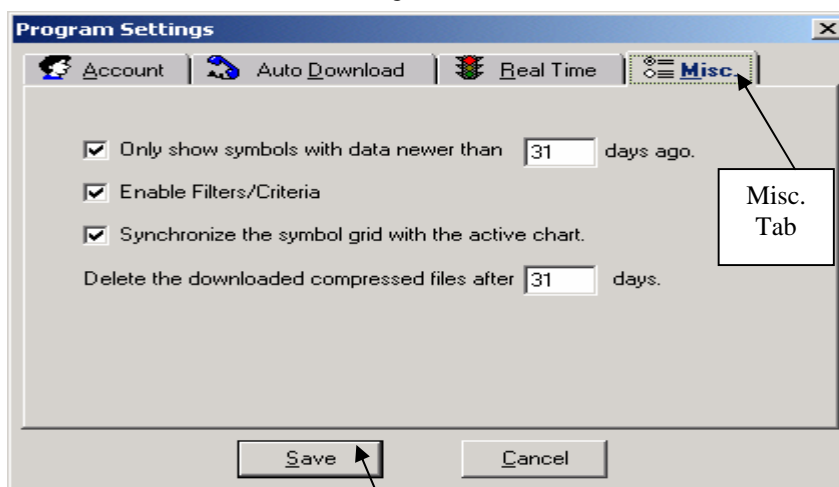
- First you will need to click on *Edit* in the upper left corner of the screen.



- Then select *Program Settings*.

- A new window will appear. This new window is the *Program Settings* window. (Figure 3.2)

(Figure 3.2)

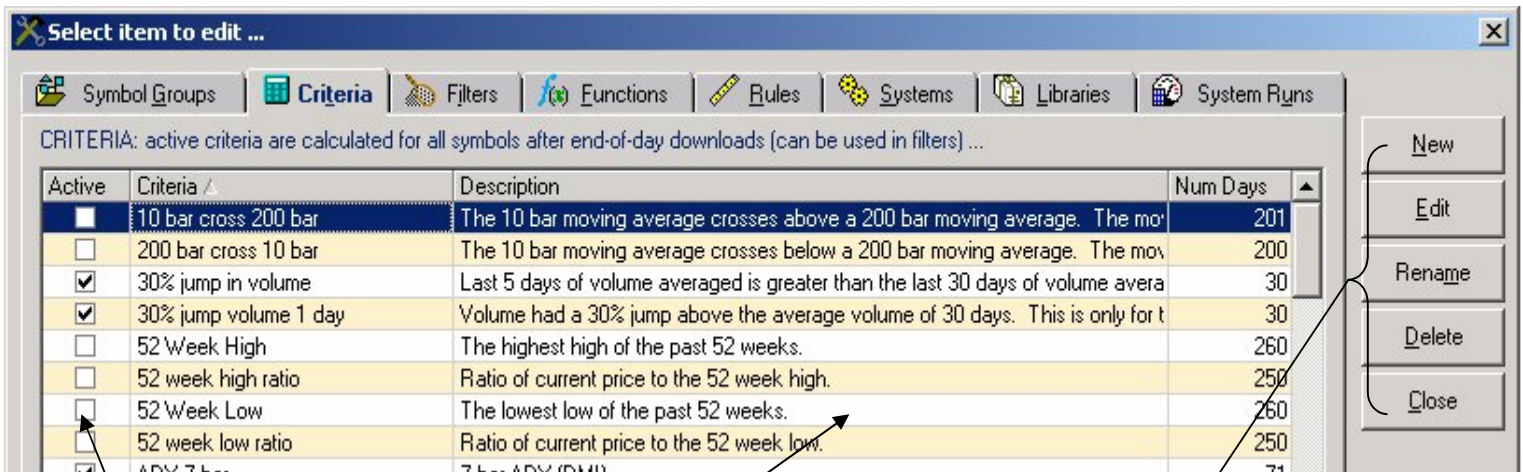


- Here you will need to select the Misc. Tab.
- Check the box Next to *Enable Filters/Criteria*.
- Click on *Save* to close the window and save the changes.

Note: Enabling more criteria adds to the calculation time.

Accessing the Filter/ Criteria

- Click on the “Trader’s tools box” button to access the filter/criteria listing. This will generate the following window, where you will need to click on the Criteria tab.

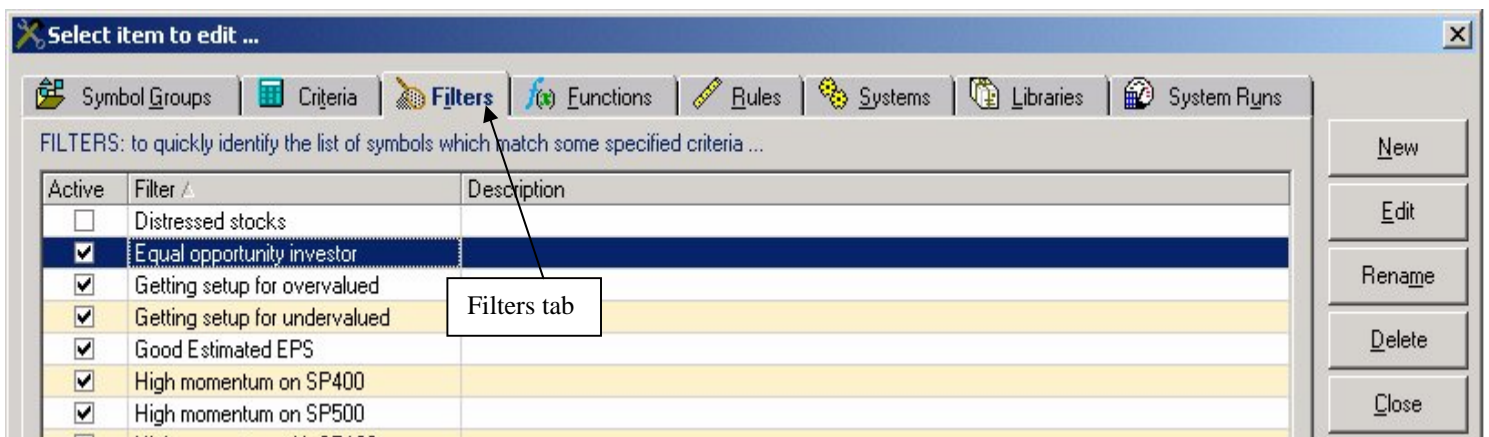


The check box verifies if the criteria will be considered in the scan.

This area gives a brief description of what is included in the search.

These buttons will edit any item selected on the left.

- The *Select...* window also allows you to enable and disable the filters. Filters use multiple filter criteria at the same time.
- You may check and uncheck the Filters to enable and disable respectively.



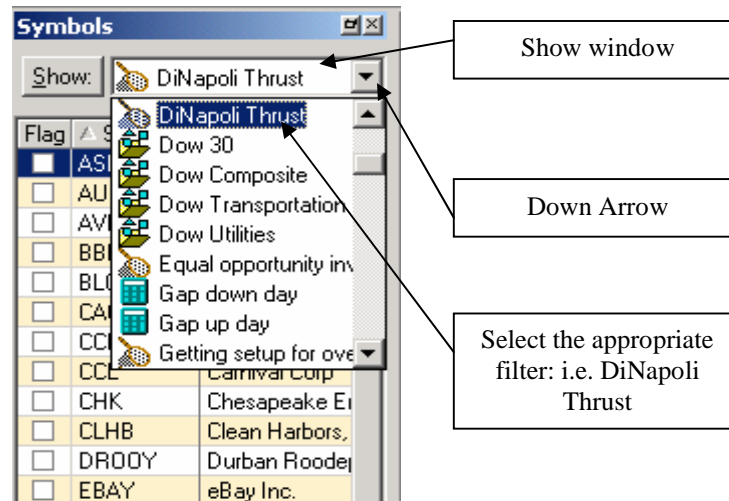
Symbol Listing

Once all of the criteria has been calculated, you may retrieve the listing of all equities that meet the criteria.

- Click on the down arrow next to the *Show* button at the top of the *Symbol Grid*.

- The Symbol Grid shows a listing of symbols that relate to the Filter stated in the *Show window*.

- You may click on any symbol in the list to chart the data.



CTP Support

For support on the use of DiNapoli studies and in particular the Retracement and Expansion Study, please contact Derek Ching at Derek@oahucapital.com in order to set an appointment. You may also call toll free at 1-888 203 4035. UK toll free +44 20-3286-9210 Toll call from other parts of the world 1-312-239-8860 Singapore: +65-9088-6721

Please understand that your support from Derek may be delayed until after market hours.

Please visit us at www.oahucapital.com for more information

Contact Genesis!

(Note: We are unable to transfer you to other departments. Please call the department you are trying to reach DIRECTLY.)

For technical questions:
Technical Support Department
Hours: 7am-8-pm MT Monday through Friday
(719) 884-0245
support@gfds.com

For address changes, portfolio adjustments, reinstating of your account, packages, upgrades or refreshes:
Sales Department
Hours: 8am-5pm Monday through Friday
(800) 808-3282 (719) 260-8145
sales@gfds.com

For cancellations, account adjustments, or billing inquiries: Billing Department
Hours: 8am-4pm Monday through Friday
(719) 884-0266

billing@gfds.com

For all Departments:
Genesis Financial Data Services
P.O. Box 49578
Colorado Springs, Co 80949
Fax - (719) 260-6113.

Genesis Financial Data Services
425 Woodmen Rd
Colorado Springs, Co 80919

GENESIS
FINANCIAL TECHNOLOGIES

PO Box 49578 Colorado Springs CO USA 80949 719/ 884-0245

